

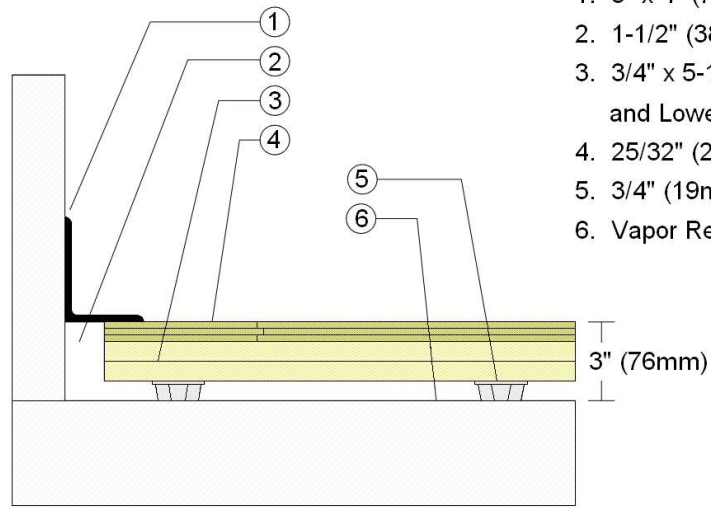


INFINITY  
Wood Floors



AACER  
SPORTS FLOORING

## WALLBASE



1. 3" x 4" (76mm x 101mm) Vent Cove Base
2. 1-1/2" (38mm) min. Expansion Space
3. 3/4" x 5-1/2" (19mm x 140mm) Upper and Lower Pine Layers
4. 25/32" (20mm) MFMA Maple Flooring
5. 3/4" (19mm) Resilient TriPower Pad
6. Vapor Retarder

Description: SCISSORLOC III

Resilience: 3/4" (19mm) TriPower Pad

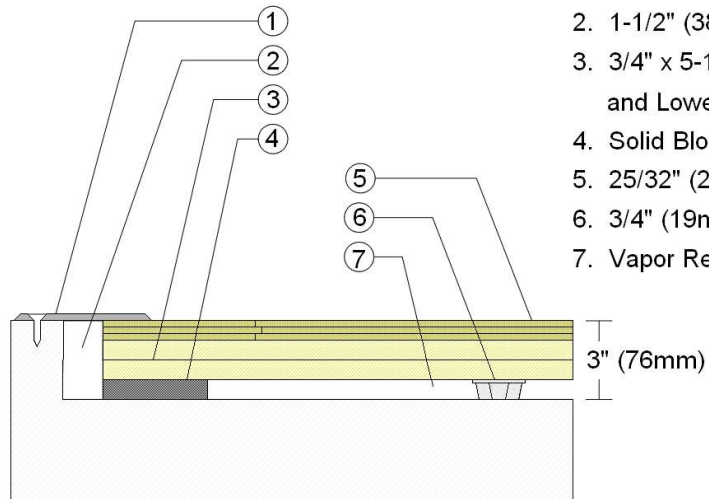
Drawn By: RR

Date: 1/1/23

### Revisions

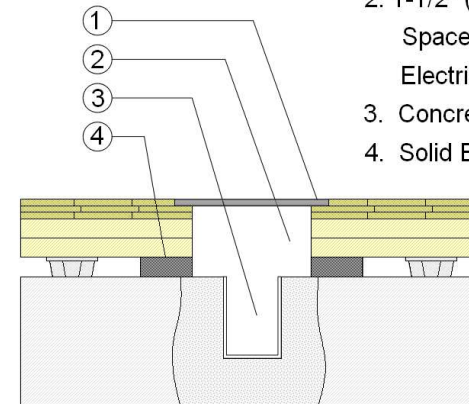
ID	Description	By	Date

## THRESHOLD



1. 1/4" (6mm) Aluminum Threshold
2. 1-1/2" (38mm) min. Expansion Space
3. 3/4" x 5-1/2" (19mm x 140mm) Upper and Lower Pine Layers
4. Solid Blocking at Doorway
5. 25/32" (20mm) MFMA Maple Flooring
6. 3/4" (19mm) Resilient TriPower Pad
7. Vapor Retarder

## EQUIPMENT



1. Floor Plate
2. 1-1/2" (38mm) Expansion Space at all Inserts and Electrical Penetrations
3. Concrete Floor Penetration
4. Solid Blocking at Insert